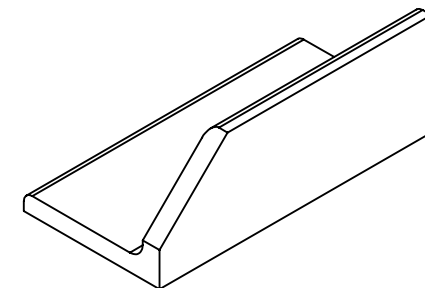
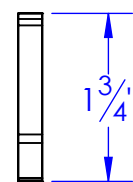
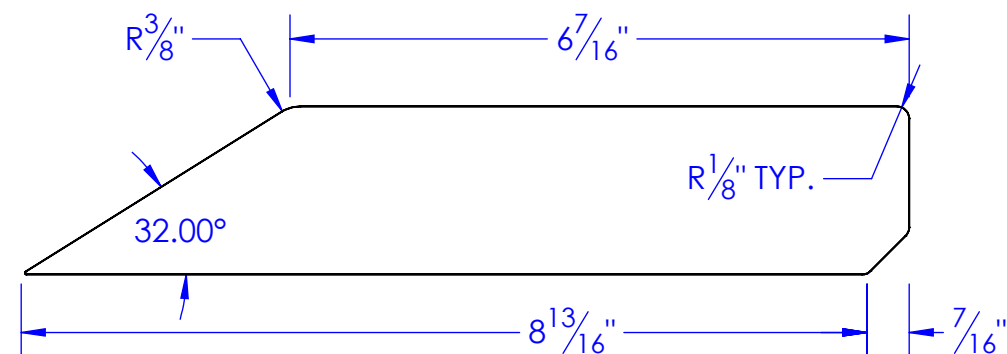
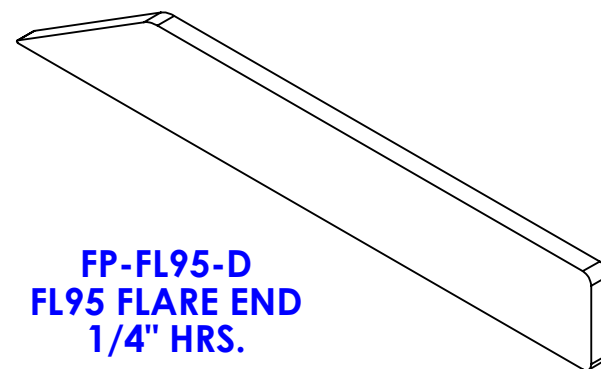
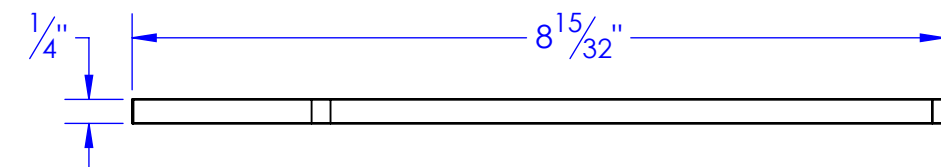
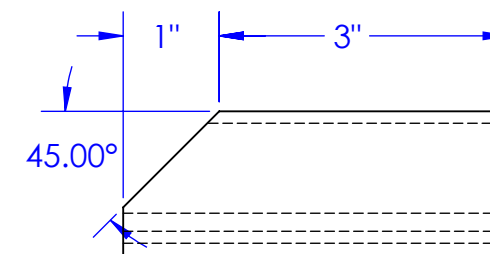
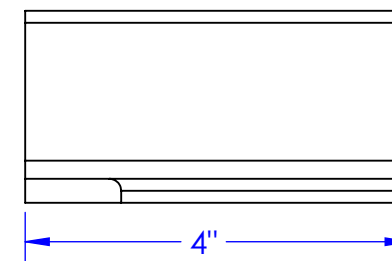
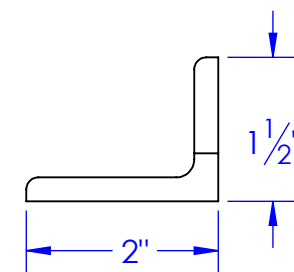


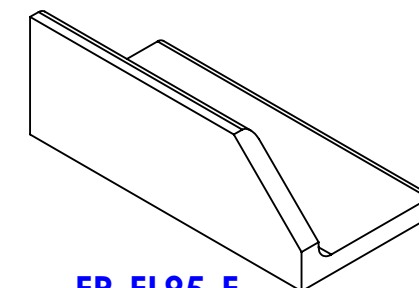
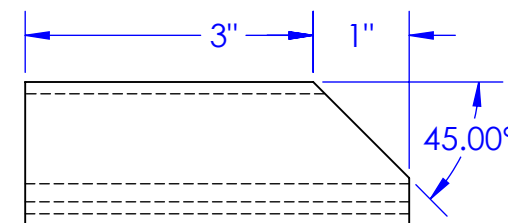
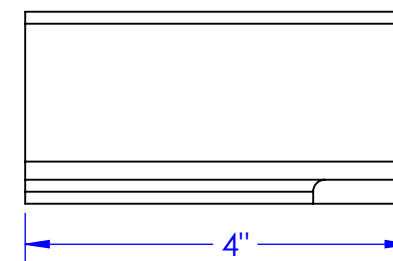
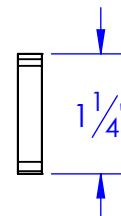
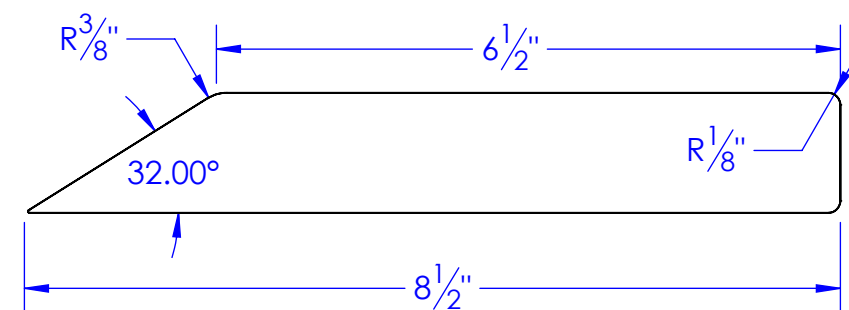
**FP-FL95-C
FL95 FLARE END CAP
1/4" HRS.**



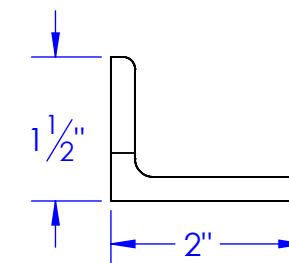
**FP-FL95-E
FENDER FLARE ANGLE, FL95,
AI 1-1/2 x 2 x 1/4**



**FP-FL95-D
FL95 FLARE END
1/4" HRS.**



**FP-FL95-F
FENDER FLARE ANGLE, FL95,
AI 1-1/2 x 2 x 1/4**



PROPRIETARY AND CONFIDENTIAL
THE INFORMATION CONTAINED IN THIS
DRAWING IS THE SOLE PROPERTY OF
<INSERT COMPANY NAME HERE>. ANY
REPRODUCTION IN PART OR AS A WHOLE
WITHOUT THE WRITTEN PERMISSION OF
<INSERT COMPANY NAME HERE> IS
PROHIBITED.

UNLESS OTHERWISE SPECIFIED:
DIMENSIONS ARE IN INCHES
TOLERANCES:
FRACTIONAL $\pm 1/16$
ANGULAR: MACH ± 1 BEND \pm
TWO PLACE DECIMAL ± 010
THREE PLACE DECIMAL ± 005
MATERIAL
1/4" HRS.
DO NOT SCALE DRAWING

	NAME	DATE	P.O. BOX 248, SABETHA KS. 66534 (785) 284-3674 FAX (785) 284-3931			
DRAWN	HEATH	3/27/2012	<div>TRIPLE C</div> <div>INC.</div>			
PART #	SEE DWG					
ASM #						
COMMENTS:			SIZE DWG. NO. REV B 90-1216 B B			
FENDER FLARE, FL95, ITEM DETAIL						
			SCALE: 1:2		WEIGHT:	SHEET 1 OF 1